

B600 Instruction for Disassembly

Edition No.: V1.0

1. Top of Mobile phone (see Fig. 1)



Fig. 1

2. Bottom of mobile phone (see Fig. 2)



Fig. 2

3. Disassembly procedures of mobile phone

Step 1:

Remove the battery cover according to direction indicated in Fig. 3.

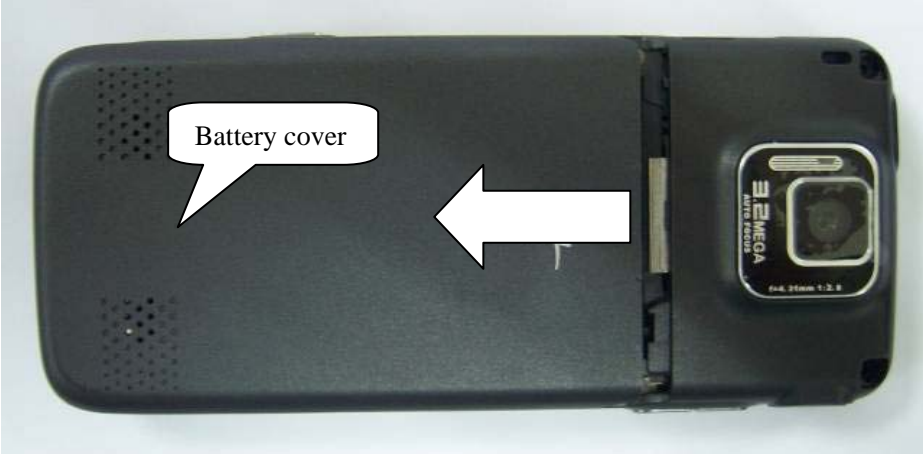


Fig. 3

FLY B600

Step 2:

Take out 6 screws from the place indicated in Fig. 4.

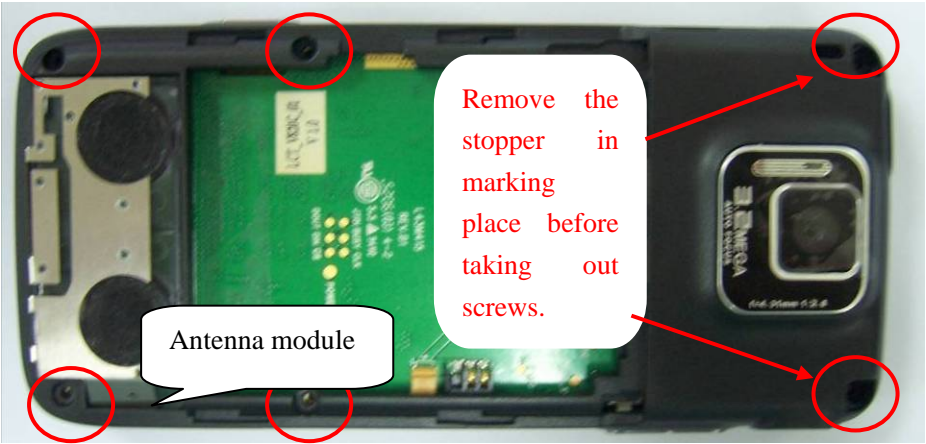


Fig. 4

Step 3:

Find an entrance as stated in Fig.5 on the end of antenna module by disassembling sheet, please note projection place indicated in Fig. 5.

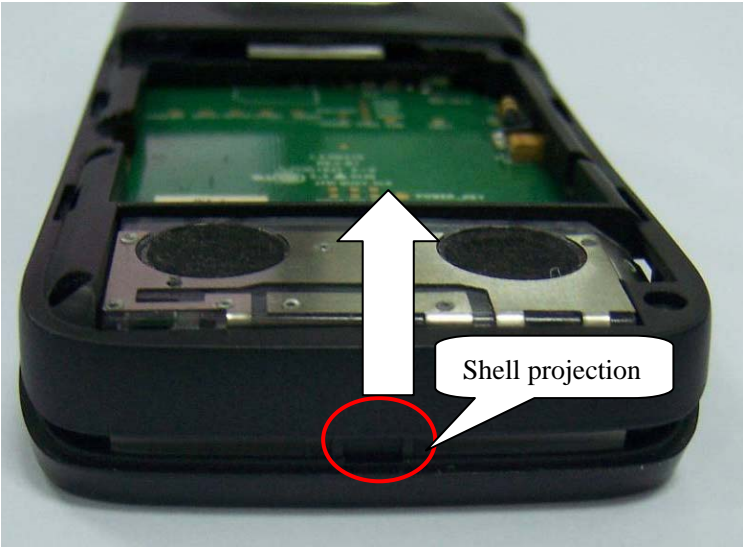


Figure 5

Step 4:

Disassemble the shell as stated in Fig. 6 and note the projection place indicated.

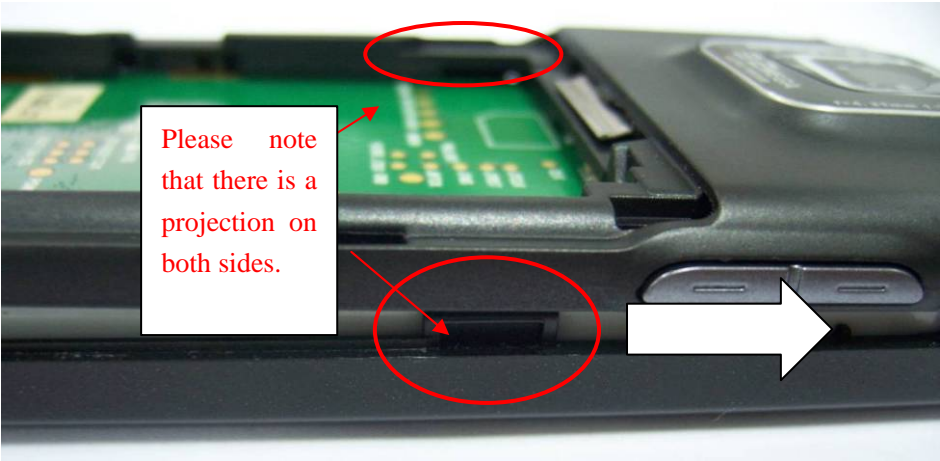


Fig. 6

Step 5:

FLY B600

Firstly, take the “receiver” out from the front shell (see Fig.8) by referring to Fig. 7.

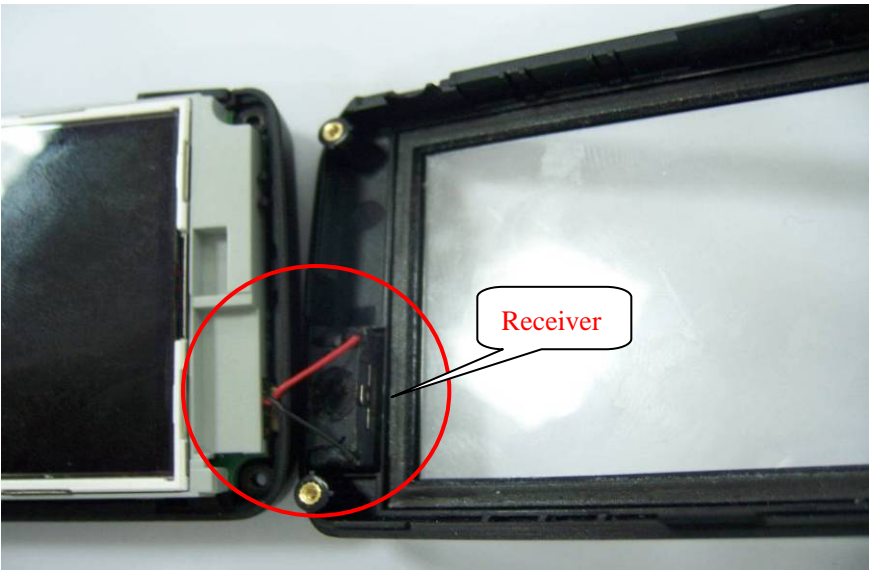


Fig. 7

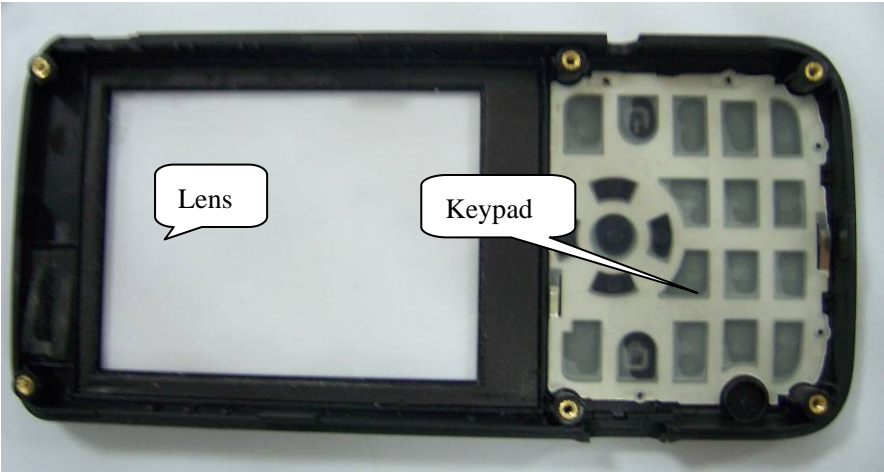


Fig. 8

Step 6:

Take out the mainboard and LCD from the back shell (see Fig.10) by referring to Fig.9.

Note: Pay attention to the projection indicated.

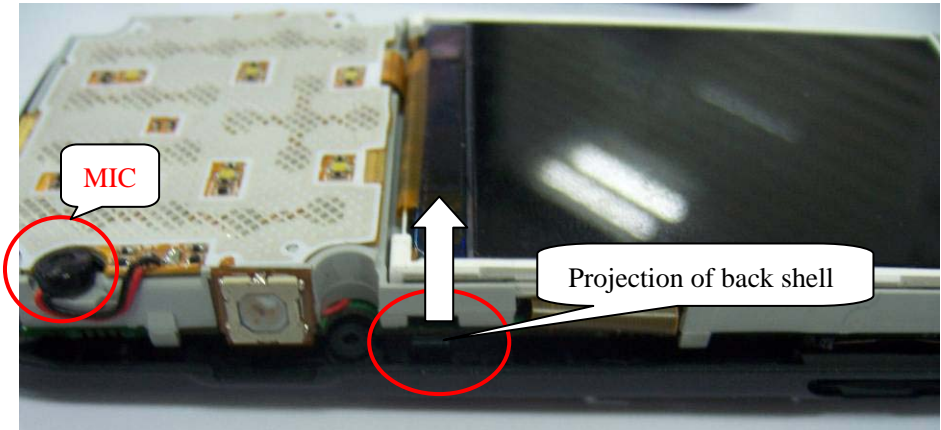


Fig.9

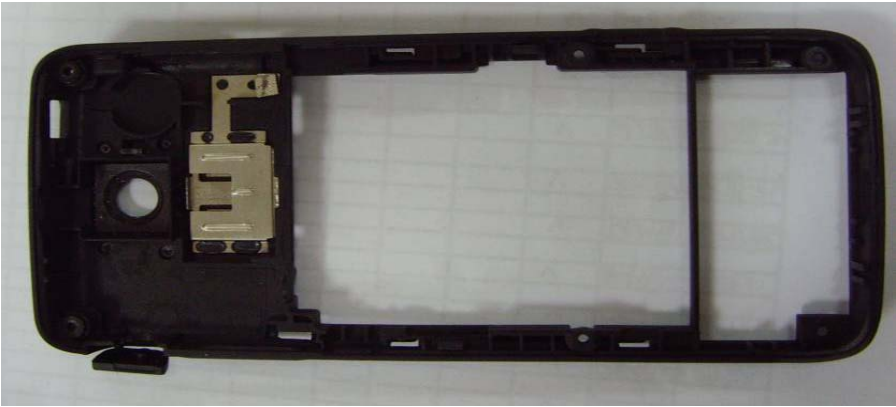


Fig. 10

Step 7:

Take out accessories such as mainboard and LCD, please refer to Fig.11 and Fig.12.

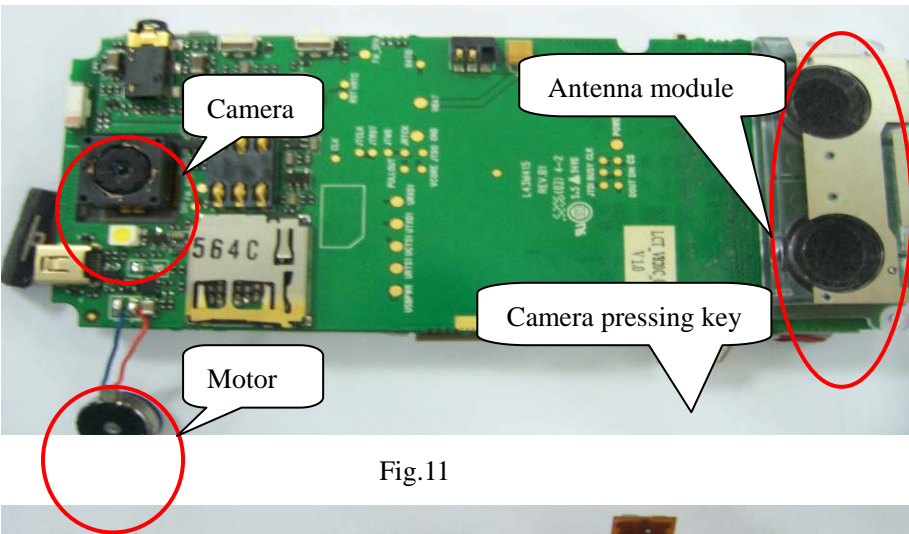


Fig.11

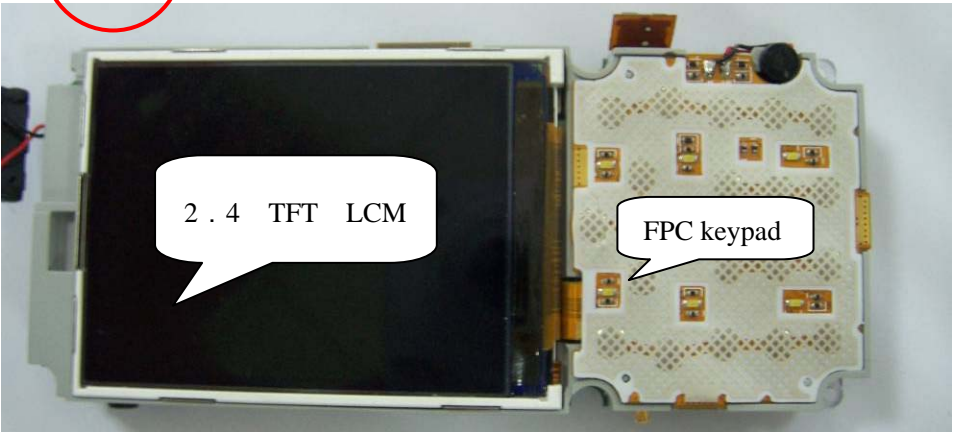


Fig. 12

Step 8:

Disassemble the “antenna module” (see Fig.14) from PCBA, please refer to Fig.13.

FLY B600

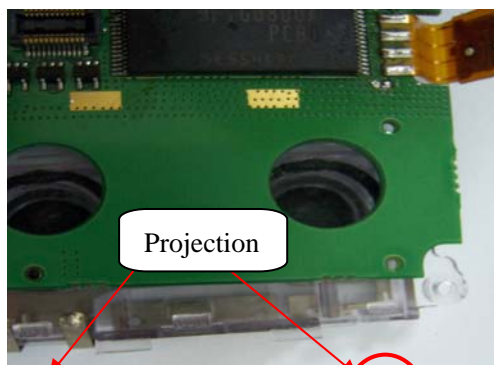


Fig. 13

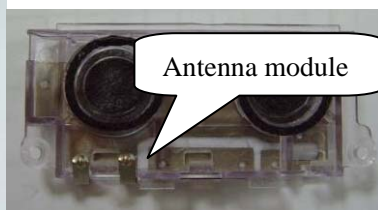


Fig.14

FLY B600

Step 9:

Separate mainboard from LCD bracket. Pay attention to projection location indicated in Fig.15 while disassembling. Take out LCD bracket from Speaker before disassembling. Please refer to Fig.16.

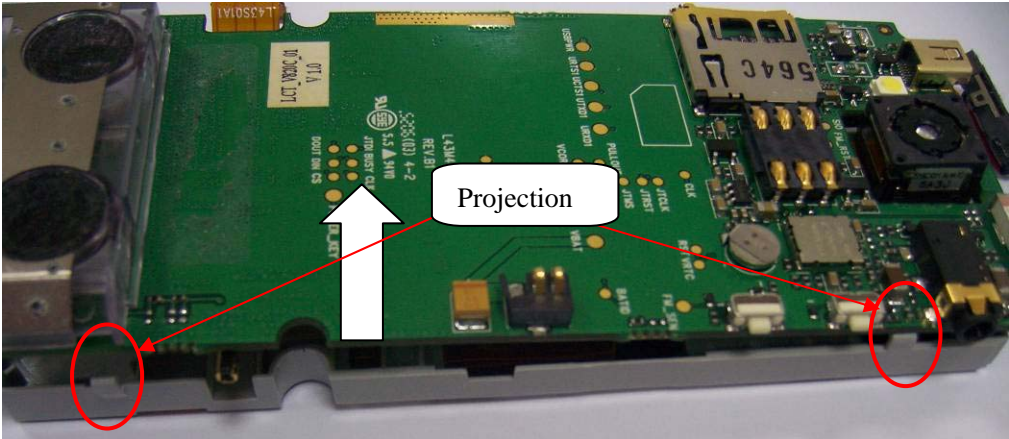


Fig. 15

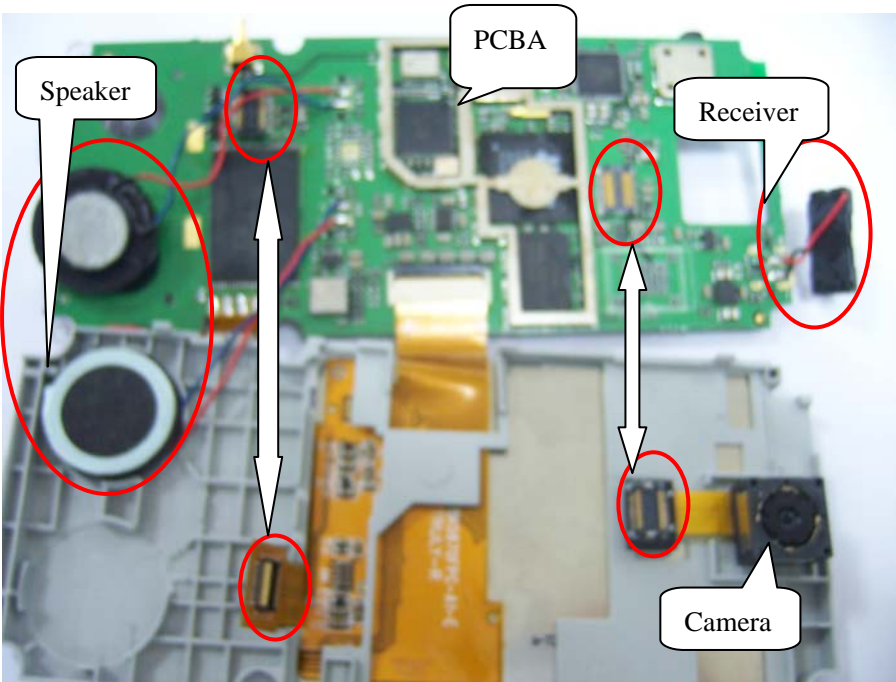


Fig. 16

Step 10:

Take out LCD through the interface of mainboard, open the projection of LCD interface before taking out, and then draw FPC out from LCD. Please refer to Fig.17.

FLY B600

Fig.19